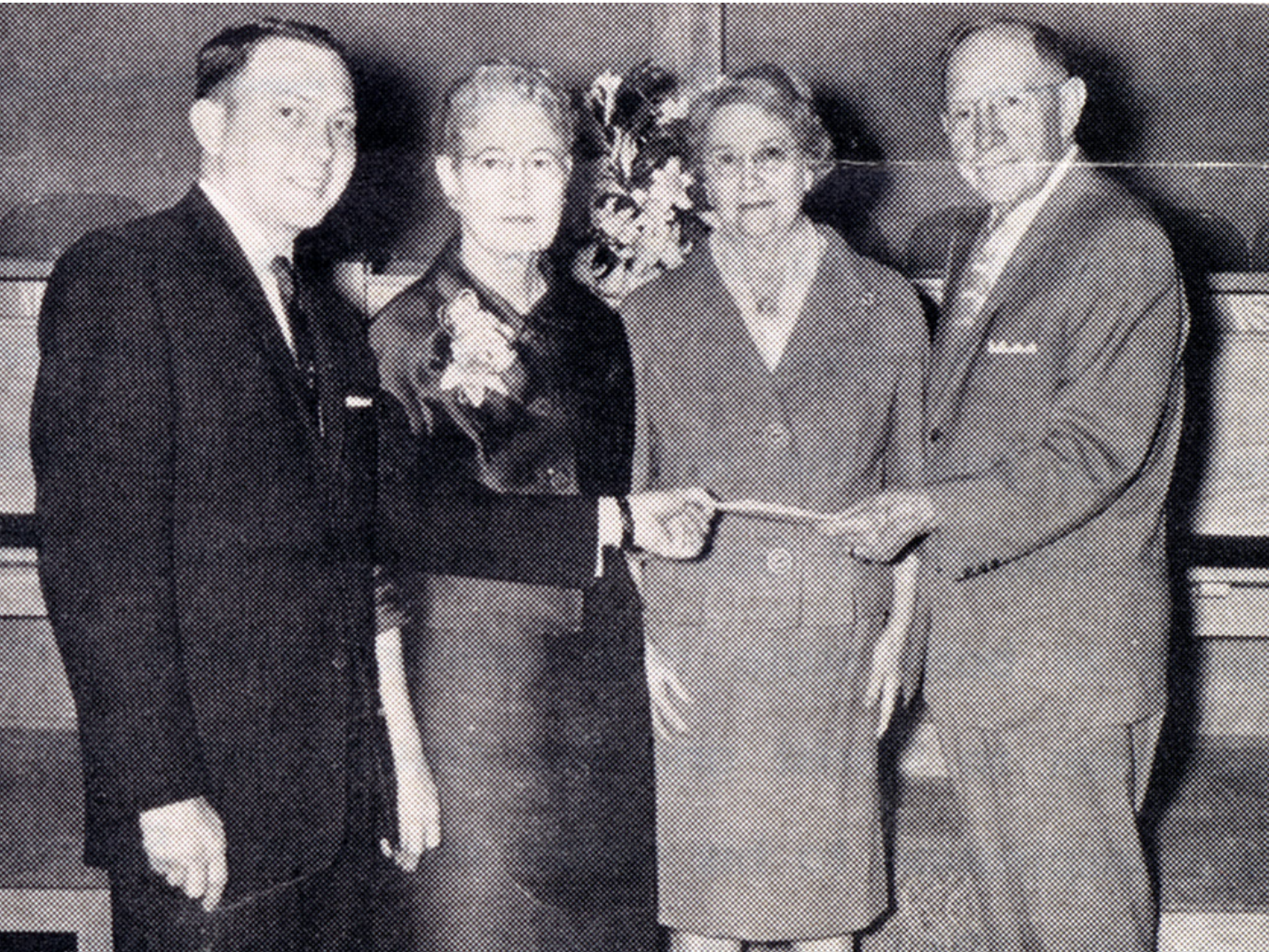


# OUR MILESTONES

## 1959-2023



### 1959

Westridge Hills Church is dedicated on Easter Sunday. (Mr. and Mrs. E.W. Baker and Wilma McManus began building a sanctuary, fellowship hall, and kitchen at 2600 N.W. 55th in Oklahoma City in 1955).

### 1985

Marty Grubbs had been serving the church as Associate Pastor responsible for music and youth since 1981. Marty becomes the Senior Pastor with a congregation of about 150 people. Members raise money to build a new sanctuary.

### 1988

Congregation opens its new 500-seat sanctuary on the property at 55th and Linn and changes its name to Belle Isle Community Church.

### 1999

Congregation changes its name to Crossings Community Church in summer. On September 12, 1999, the first service is held at its new location of 14600 N. Portland Ave., Oklahoma City, with more than 3,100 people in attendance. The new 198,000 sq. foot facility was built free of any long-term debt.

### 2003

To accommodate the growing Children's and Student Ministries, a three-story 64,000 sq. foot addition is added to the south end of the building.

### 2005

Crossings Medical Clinic opens, providing medical, dental, vision and mental health services to the un/underinsured living in the OKC metroplex—relocated in 2007 to 2208 W. Hefner Road, becoming the new Crossings Community Center.

### 2007

Crossings Christian School opens its Lower School campus on the church grounds and becomes accredited by the ACSI in 2008.

### 2009

Chapel service begins in September 2009 in newly completed 500-seat Chapel (reminiscent of Belle Isle sanctuary). Atrium expansion to the main campus completed August 2009.

### 2010

Crossings Christian School completes construction and welcomes first students to newly built Upper School in August 2010.

### 2013

The Venue, a new 1100-seat worship center opens on January 27 for the contemporary worship services.

### 2014

Crossings Christian School opens new Athletic Complex, including the Knights Stadium (for football, soccer & track), a baseball and softball field, and fieldhouse.

### 2015

In January, the new 37,000-square-foot Crossings Community Center and Clinic at 10255 N. Pennsylvania is completed. Also in January, Crossings Christian School opens Middle School campus. Crossings begins building a satellite campus in North Edmond.

### 2016

Crossings Edmond, at 1500 W. Covell Road, holds grand opening service on November 6 with 1,258 people in attendance.

### 2017

OKC Campus renovates & modernizes 40,000 sq. feet of Crossings Kids large group & small group spaces.

### 2018

New satellite campus launches at Joseph Harp Correctional Center on Easter Sunday with nearly 200 in attendance.

### 2019

Celebrated Crossings 60th anniversary throughout the year with a special celebration Sunday, various events, and focused service opportunities.

### 2020

All on-campus services and activities were suspended from mid-March through early June because of the COVID-19 pandemic. As a result, online live stream services became the primary source for worship services. Additionally, the OK Dept. of Corrections reached out, so Crossings donated and delivered mobile, state-of-the-art technology to 22 Oklahoma prisons for streaming Crossings worship services. As of 2022, live services are also taking place in eight Oklahoma prison campuses.

### 2022

In August, Crossings Community Clinic expanded as Good Shepherd Clinic merged with us to become Crossings Midtown Clinic (at 12th & Harvey). The new Chapel at Joseph Harp Correctional Center was completed and held dedication services on September 10. Crossings Community Center launched Sunday worship service on October 2.

### 2023

On August 20, Mayfair Church of Christ gifted Crossings with their building at 2340 NW 50th St. in Oklahoma City to become the next Crossings location. Renovations are underway, with plans to open in early 2024.

The Voice of Hope Initiative launched Fall 2023 to raise funds to expand Crossings locations and ministry efforts in order to continue the legacy of faith and generosity. (Details at [crossings.church/hope](https://crossings.church/hope).)